

## Aircraft Noise Abatement Task Force

In August of 2002, the Pinellas County Board of County Commissioners adopted a resolution creating the Aircraft Noise Abatement Task Force (Task Force) to establish a means of communication among St. Petersburg-Clearwater International Airport, airlines, Airport users, the military and residents of nearby communities, all of whom share a common concern about aircraft noise.

Currently serving on the Task Force are representatives from the local communities, airlines, general aviation, the military and the Airport. The goal of the Task Force is to work with the community to explore methods of reducing aircraft noise and its impact on the local community.

The Task Force began meeting in February 2003. Meetings are conducted quarterly and reports are submitted semi-annually to the Board of County Commissioners.



THANK YOU FOR FOLLOWING  
NOISE ABATEMENT PROCEDURES

## Aircraft Noise Hotline

You may contact the Airport with questions related to noise or to report a noise event. The phone number for the Aircraft Noise Hotline is (727) 453-7877.

If no one is available to take your call, please leave your name, telephone number and information about the noise event. An investigation will be conducted based on your information. All reports are documented and you will be provided with a response if requested.

In order to serve you better, please provide as much of the following information as possible:

- Your name and address
- Date and time of occurrence
- Type of aircraft (airline, military, business jet, helicopter, etc.)
- Description of aircraft (color, markings, size, etc.)
- Direction of flight (north, south, east or west)
- Any other pertinent information

You may visit the Airport's website at:  
[www.fly2PIE.com](http://www.fly2PIE.com)



14700 Terminal Boulevard, Suite 221  
Clearwater, FL 33762  
(727) 453-7800

Pinellas County complies with the Americans with Disabilities Act. To obtain accessible formats of this document, please contact the Communications Department at: (727) 464-4600/TDD (727) 464-4431.

Printed on recycled paper 9/03

# NOISE ABATEMENT PROCEDURES



## Striving to be a Good Neighbor

Located just off Roosevelt Boulevard in central Pinellas County, the St. Petersburg-Clearwater International Airport serves the needs of the local aviation community as well as nearly one million air travelers each year. While the central location puts the Airport within convenient reach to all county residents, its proximity to residential neighborhoods makes some level of exposure to aircraft noise inevitable. With this in mind, the Airport is striving to lessen the impact of noise on neighboring communities, while managing its own operation and growth. In addition to offering convenient access to air travel, St. Petersburg-Clearwater International Airport is an important economic asset to the community, contributing 16,500 local jobs and \$748 million annually.

## Noise Abatement Procedures

In cooperation with the Federal Aviation Administration (FAA), the Airport has implemented noise abatement procedures to help mitigate the noise exposure of nearby residential communities.

Both the North Bay Visual Approach (NBVA) and the St. Pete-2 Departure (SP2) noise abatement procedures direct arriving and departing aircraft over water, avoiding residential areas (see maps).

Based on FAA regulations, the Airport's noise abatement procedures apply only to airline aircraft with a gross weight of 60,000 pounds or more. Pilots may deviate from these procedures when factors such as weather or conflicting air traffic are a concern.

### ARRIVALS



The NBVA (depicted above) requires airline aircraft to approach the Airport from the north-east toward the Oldsmar power plant. Once the aircraft reaches the power plant, it continues southwest toward the Airport. At a point approximately one mile north of the airport, the aircraft turns south for its final approach and landing.

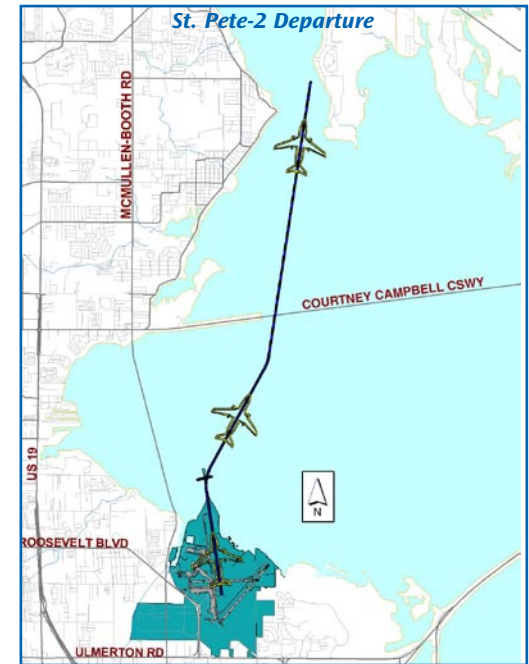
Due to safety concerns, the FAA requires this procedure to be used only during clear weather and during daylight hours.

In addition to the use of Noise Abatement Procedures, the Airport restricts airlines from performing certain activities during nighttime hours.

### Airlines are prohibited from the following activities between 11:00 p.m. and 7:00 a.m. daily:

- Touch-and-go operations
- Practice instrument approaches
- Engine run-ups for routine maintenance

### DEPARTURES



The SP2 (depicted above) applies to airline aircraft departing the Airport to the north. Upon departure from Runway 35R, aircraft turn to the northeast on a 030 degree heading, toward the Oldsmar power plant. When flying SP2 departure, the majority of the aircraft's ascent occurs while they are over water, minimizing residents' exposure to aircraft noise. This procedure may be used at any time, including during nighttime hours. On occasion, conflicting air traffic or hazardous weather may cause pilots to deviate from this procedure.

## Fly Friendly Program

Though the noise abatement procedures apply to airline aircraft only, St. Petersburg-Clearwater International Airport is continuing efforts to involve general aviation in noise-mitigation with a focus on pilot education. The Airport is working to educate pilots, fixed-base operators and corporate jet centers on the noise issue and ways they can assist the Airport in its goal to minimize noise as much as is practical. These efforts are being expanded and developed into a *Fly Friendly* program intended to expand pilot participation and overall effectiveness of the Airport's noise-mitigation program.